

PROJECT INFORMATION: *River Wallington Gabion Replacement Works* *January to February 2018*

Fareham Borough Council is undertaking replacement works to the defences along the River Wallington. These works will involve removing the existing erosion barrier, formed of a gabion basket retaining wall 41m long and replacing it with a like-for-like erosion barrier.



The current erosion barrier has reached the end of its serviceable life and is no longer maintainable. The replacement works will reduce the risk of erosion and manage the flood risk further upstream at Wallington Village.



HOW LONG WILL THE WORKS TAKE?

The works are due to start on site on the 22nd January 2018, and will last for approximately 3-4 weeks.

During this time construction machinery, including an excavator and dumper truck, will be used to move material around from the site compound adjacent to the works area, and to remove and replace the erosion barrier.

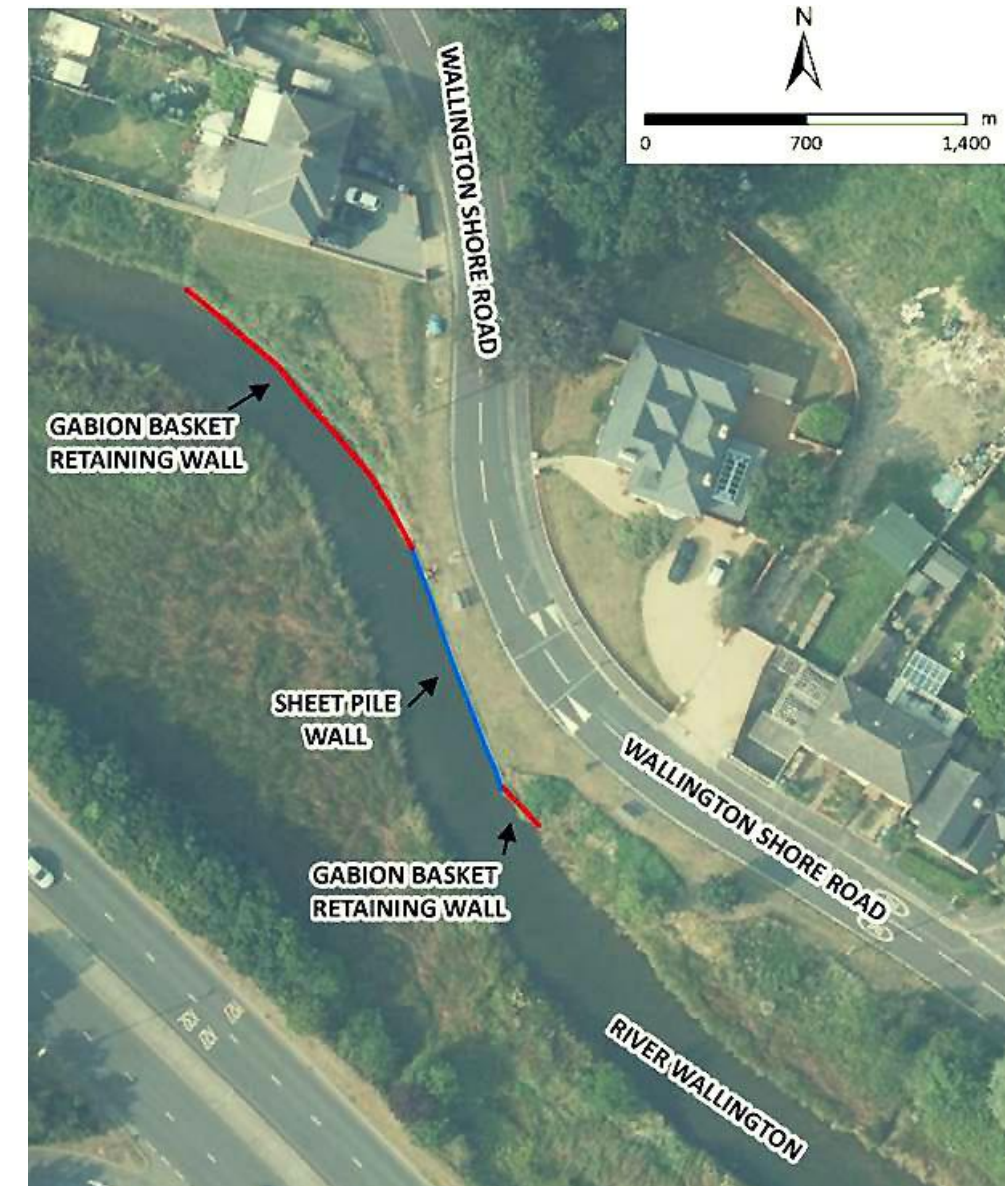
HOW WILL I BE AFFECTED?

Due to the limited amount of space available at the works location, a traffic management plan will be implemented to allow for the safe delivery of materials to site. This will consist of a temporary one-lane road closure, which will be removed on completion of each delivery, to minimise disruption to local residents and users of Wallington Shore Road.

WHAT WILL I SEE?

Construction traffic will be moving around the works area, making deliveries, transporting material from the compound to the site and replacing the erosion barrier. A compound will be set up on the grassed area behind the erosion barrier and will be kept separate from the public as far as possible.

Please keep your safety in mind when walking close to construction traffic.



KEEP UPDATED

Please bear with us during this period of disruption. We are working hard to balance the speed and quality of construction with the need to minimise the disruption to local residents and users.



023 9244 6019



www.escp.org.uk

info@escp.org.uk



EasternSolentCoastalPartnership

@EasternSolentCP



Working together - protecting our coastline

FAREHAM
BOROUGH COUNCIL



EASTERN
SOLENT | COASTAL
PARTNERSHIP